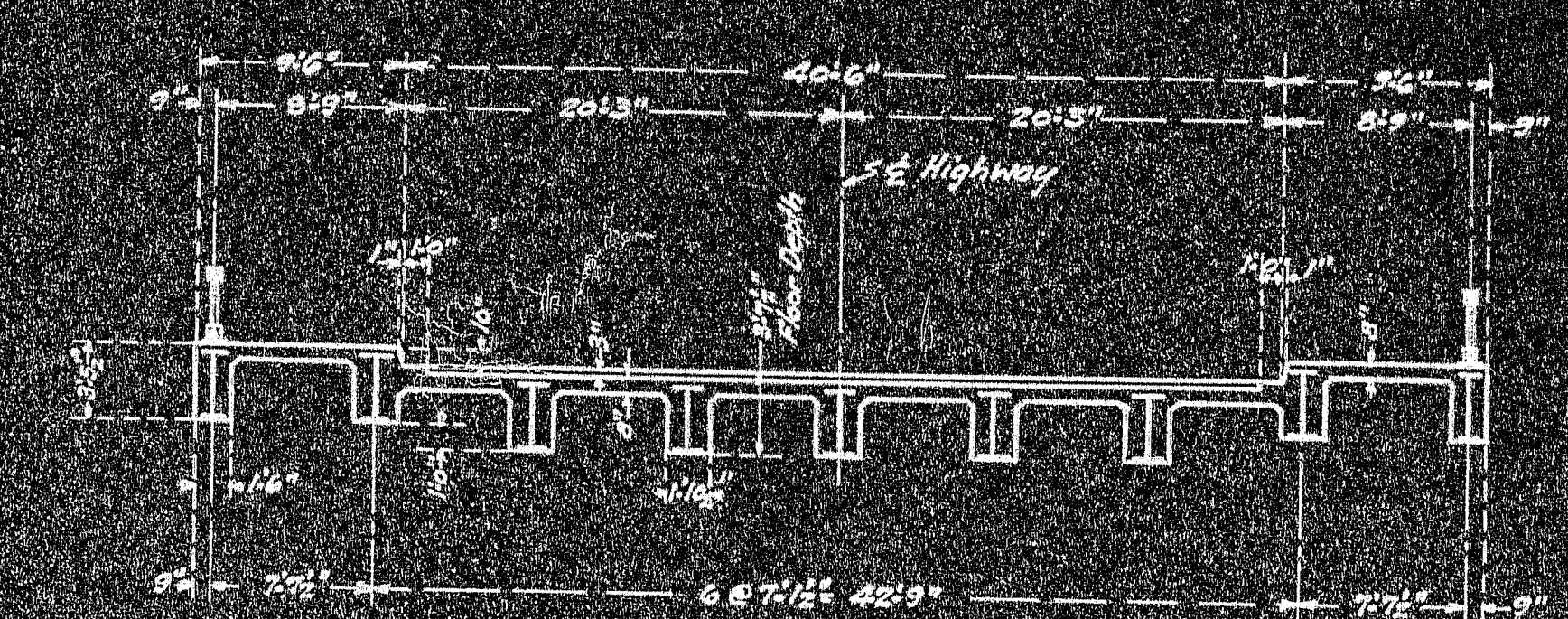
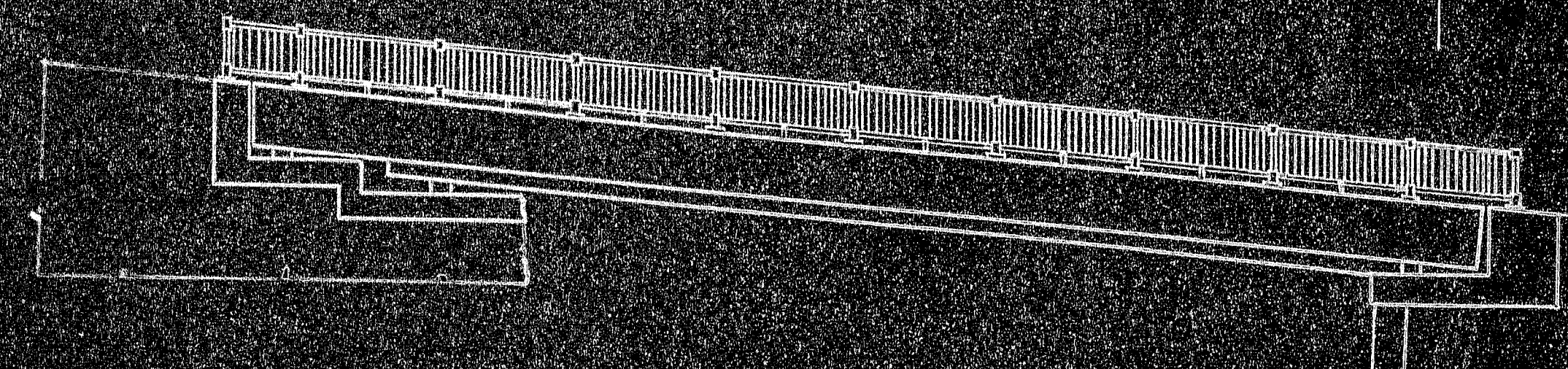


**GENERAL PLAN**  
Scale - 1/4" = 10'



**SECTION**  
Scale - 1/4" = 10'



**ELEVATION**  
Scale - 1/4" = 10'

**GENERAL NOTES:-**  
Design Data  
Bridge designed in accordance with the American Association of State Highway Officials' Standard Specifications for Highway Bridges, 1935.  
Live Load - H-20  
Structural Steel - See Sheet #2.  
Concrete -  
All concrete shall be in accordance with the Eastern Maine Railroad's General Specifications for Concrete, Plain and Reinforced, 1931.  
All concrete shall have a minimum compressive strength of 3000 lb. at 28 days.  
All reinforcing bars shall be of the deformed type.  
All concrete wearing surfaces on roadway and sidewalks shall receive a rough broomed finish. All other concrete shall receive a rubbed finish.  
Areas shown hatched are bearings and shall be carefully finished level to the exact elevations shown.  
GENERAL:-  
Depth Mark - Top of masonry under bearing of East Truss on North Abutment. Elevation = 131.75

**GENERAL PLAN 112-66**

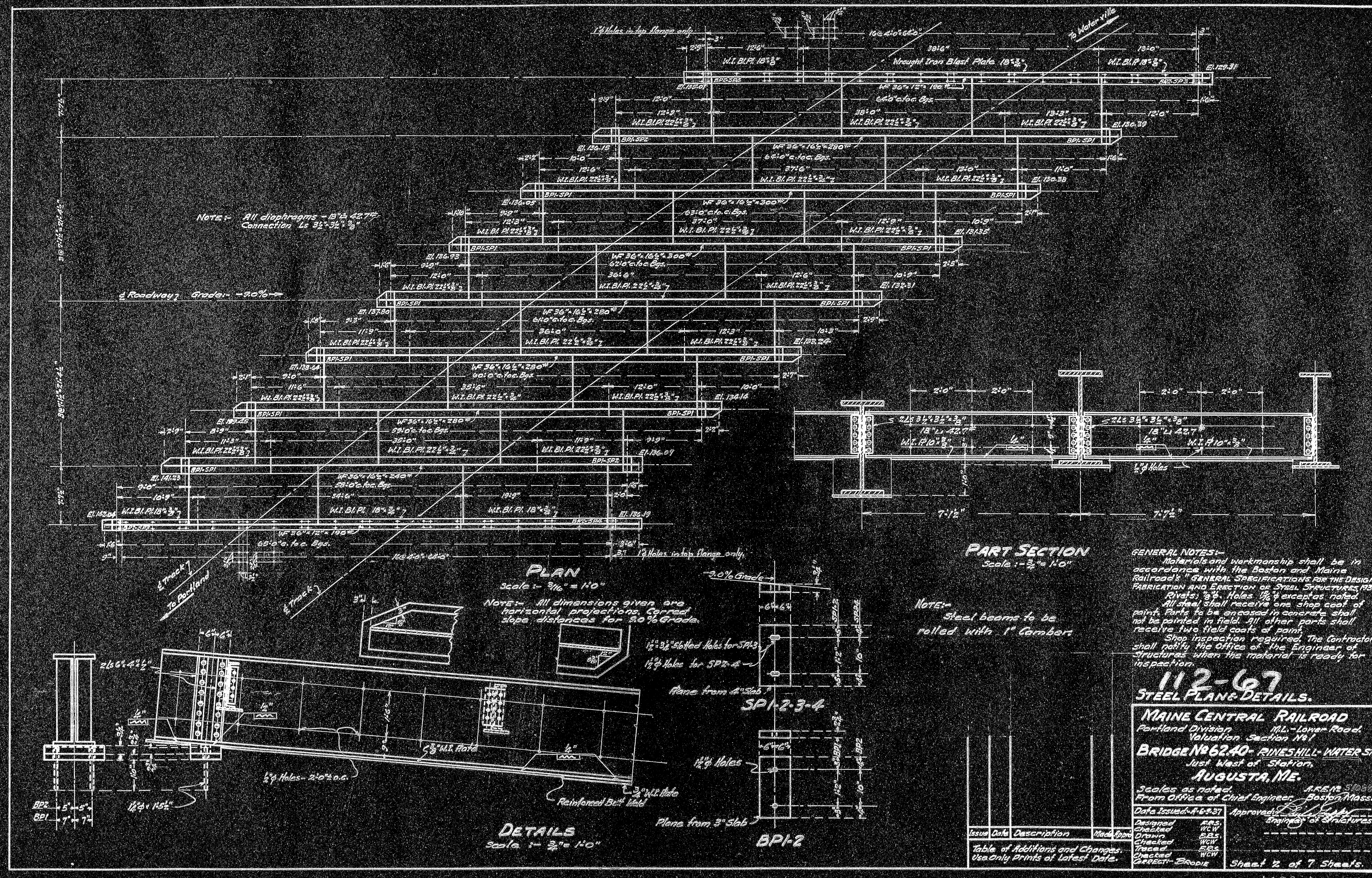
**MAINE CENTRAL RAILROAD**  
Portland Division, Mill Lower Road.  
Valley Section No. 1  
**BRIDGE NO. 240 - RINES HILL - WATER ST.**  
Just West of Station  
**AUGUSTA, ME.**

Scales as noted  
From Office of Chief Engineer  
Date Issued - 4-4-37  
Approved - [Signature]  
Engineer of Structures  
Sheet 1 of 7 Sheets

Date	Description	By
4-4-37	Designed	W.C.P.
4-4-37	Checked	W.C.P.
4-4-37	Checked	W.C.P.
4-4-37	Checked	W.C.P.
4-4-37	Checked	W.C.P.

Table of Additions and Changes  
Use Only Prints of Latest Date

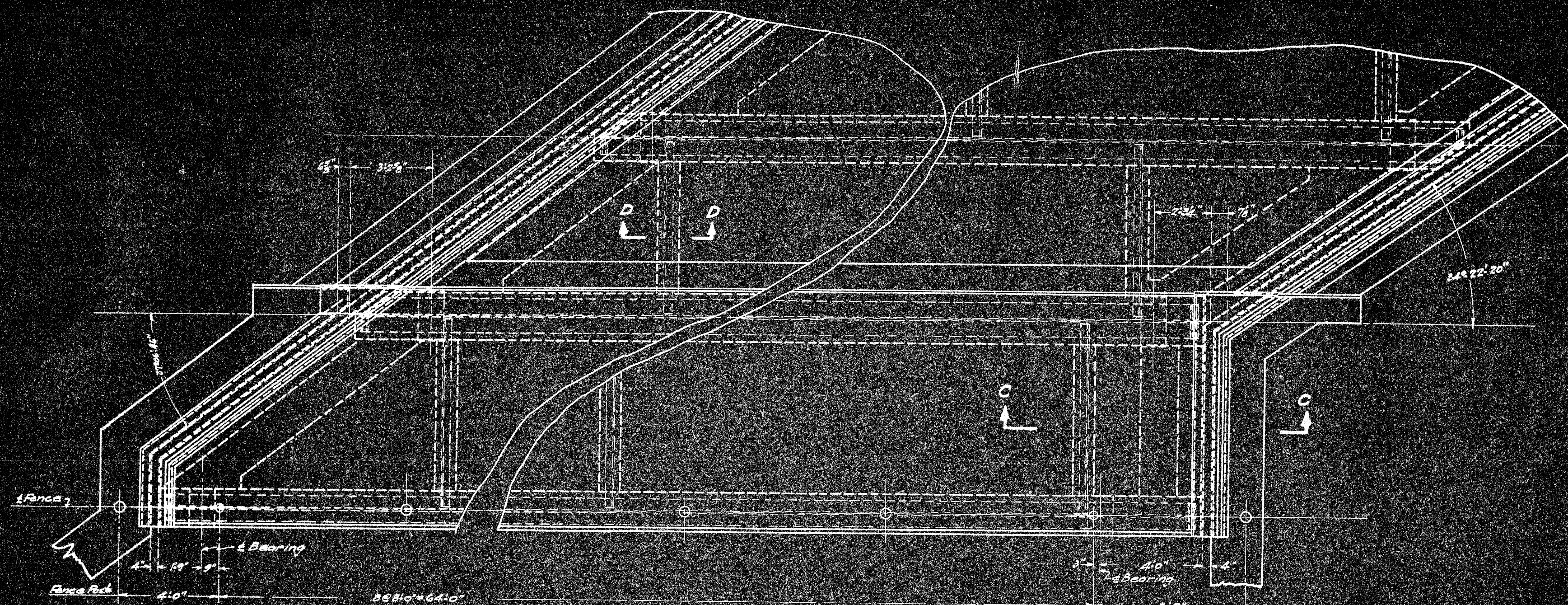




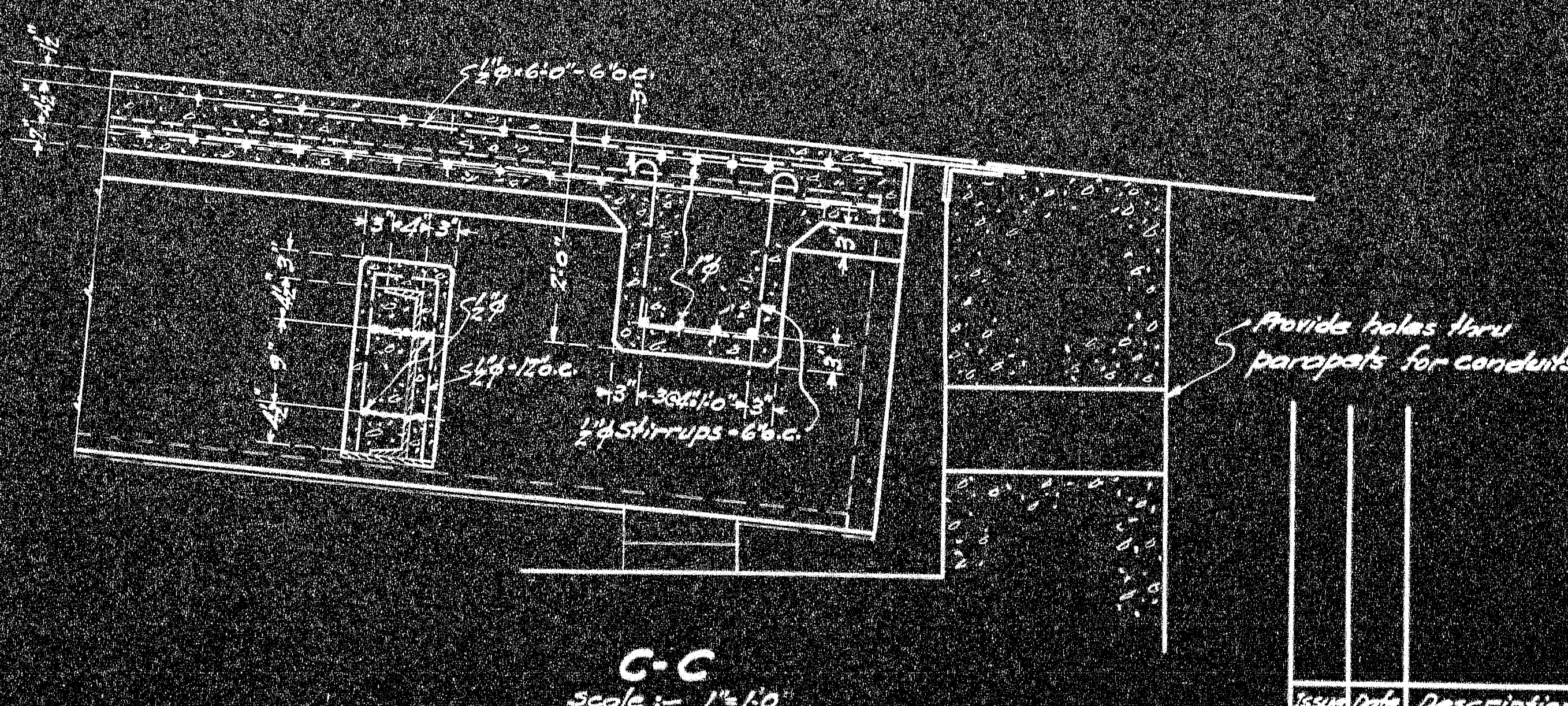
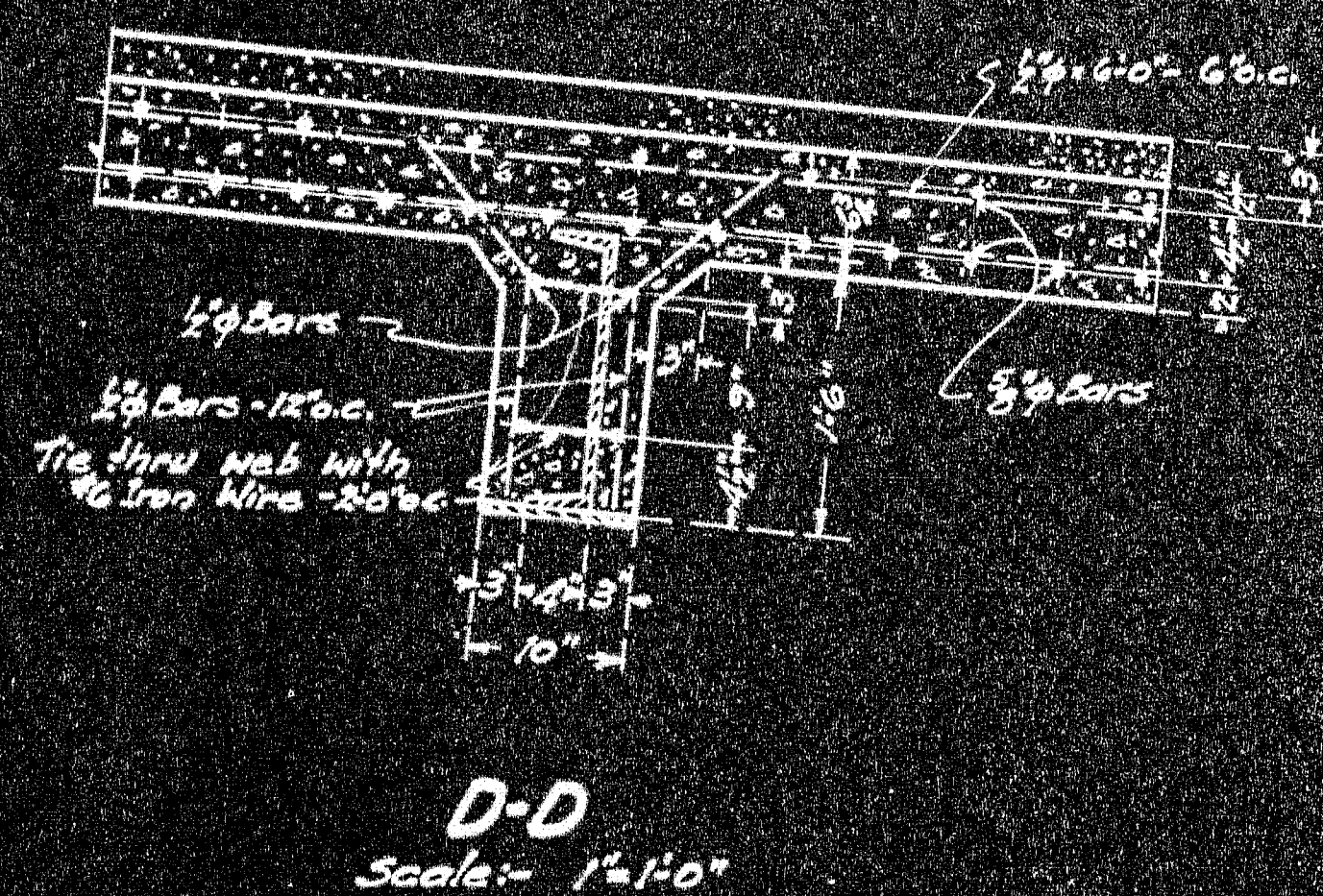








**PART PLAN**  
Scale: 1/2" = 1'-0"



**112-69**

**CONCRETE DETAILS**

**MAINE CENTRAL RAILROAD**  
Portland Division M.L. - Lower Road  
Valuation Section No. 1  
**BRIDGE NO. 6240 - PINES HILL WATER ST.**  
Just West of Station,  
**AUGUSTA, ME.**

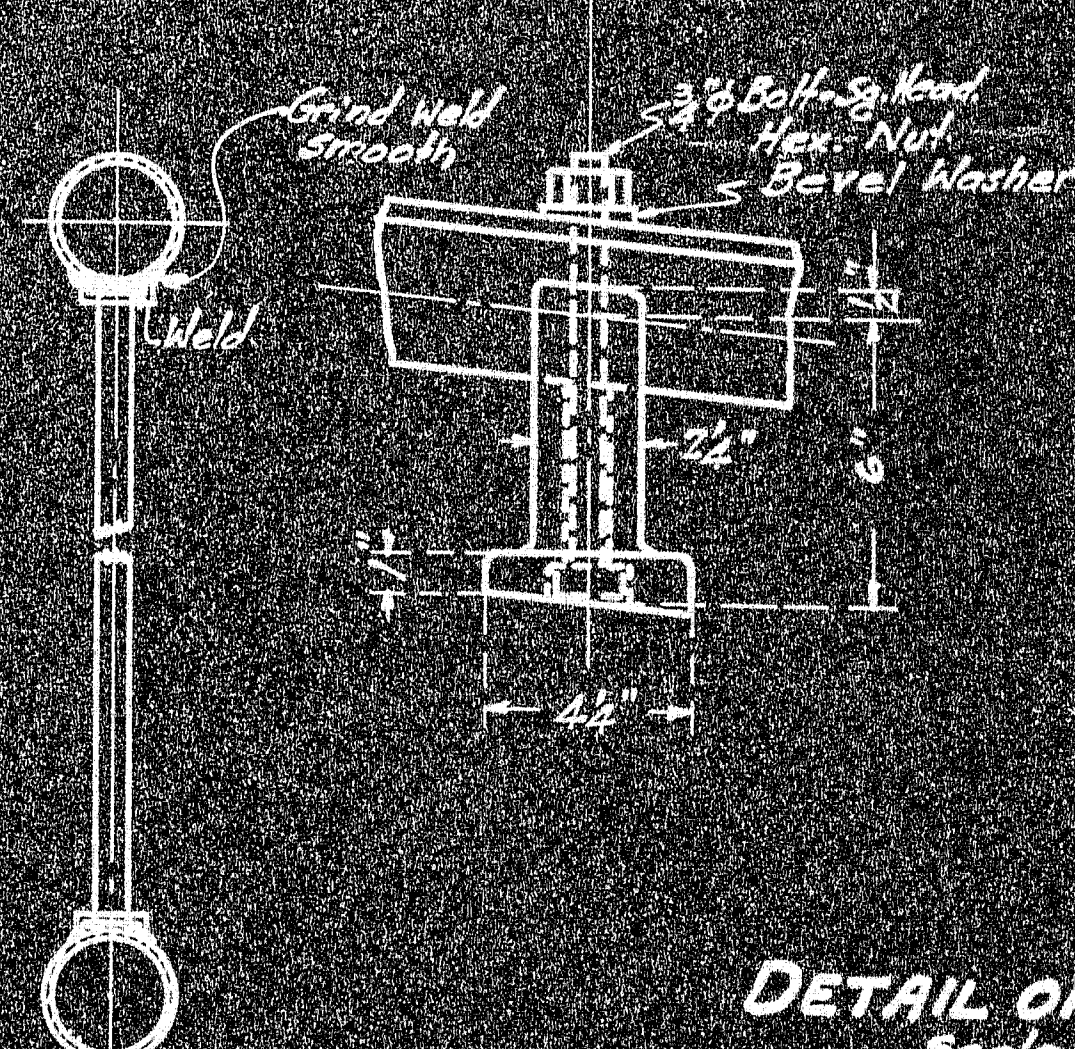
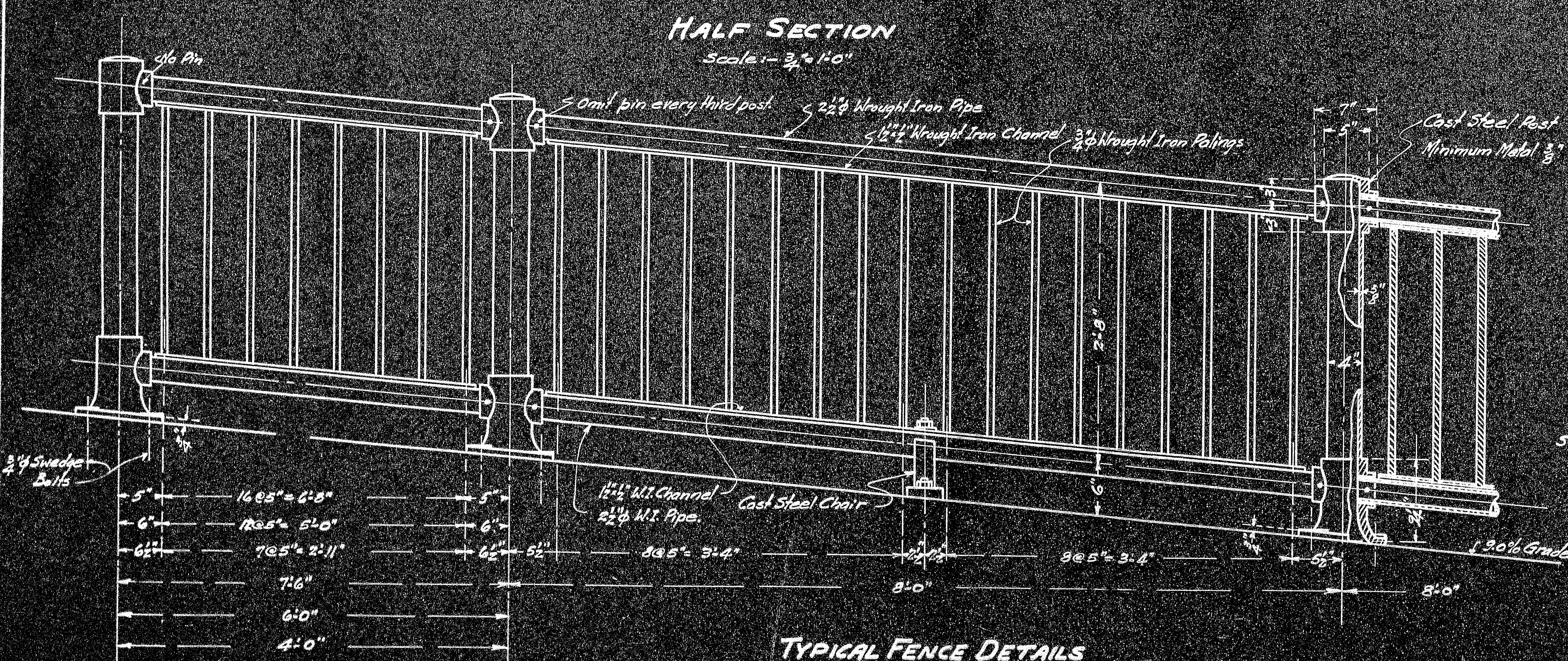
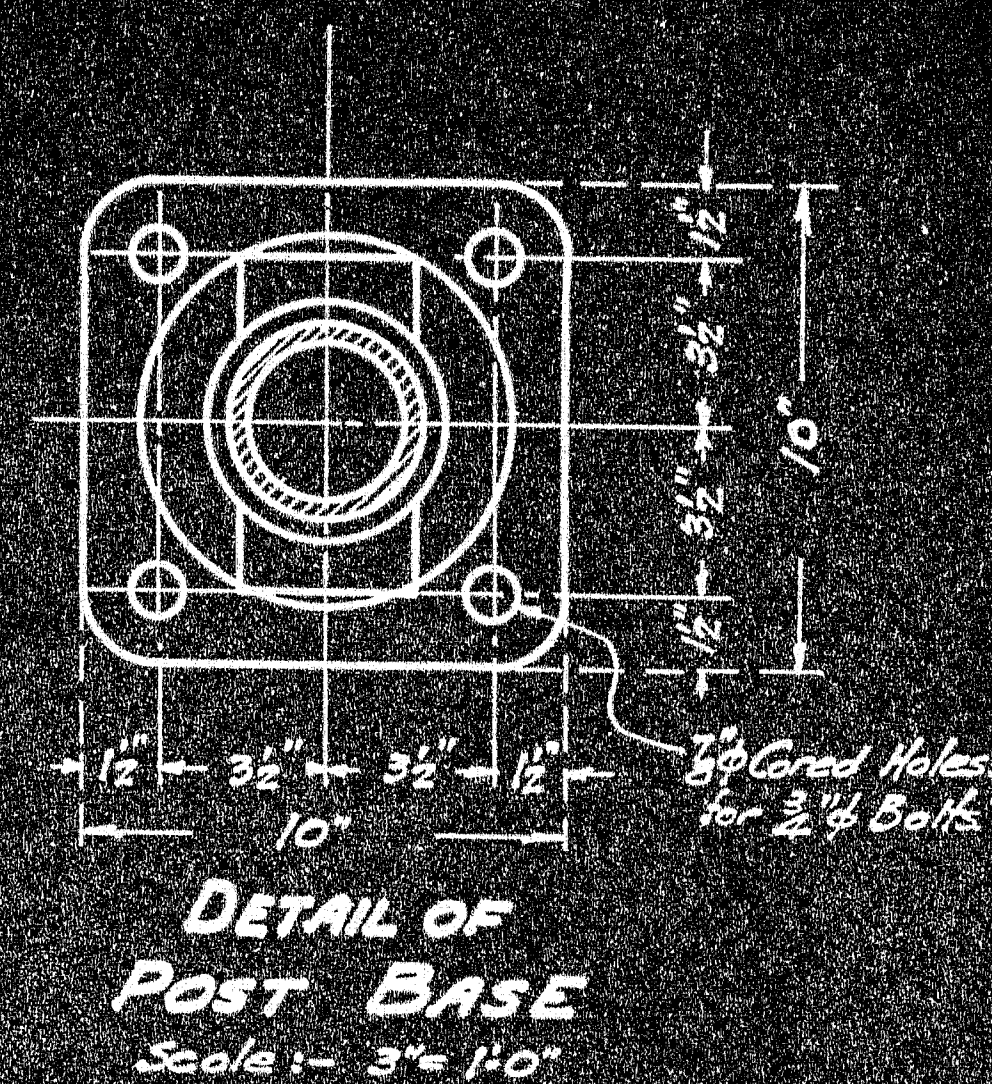
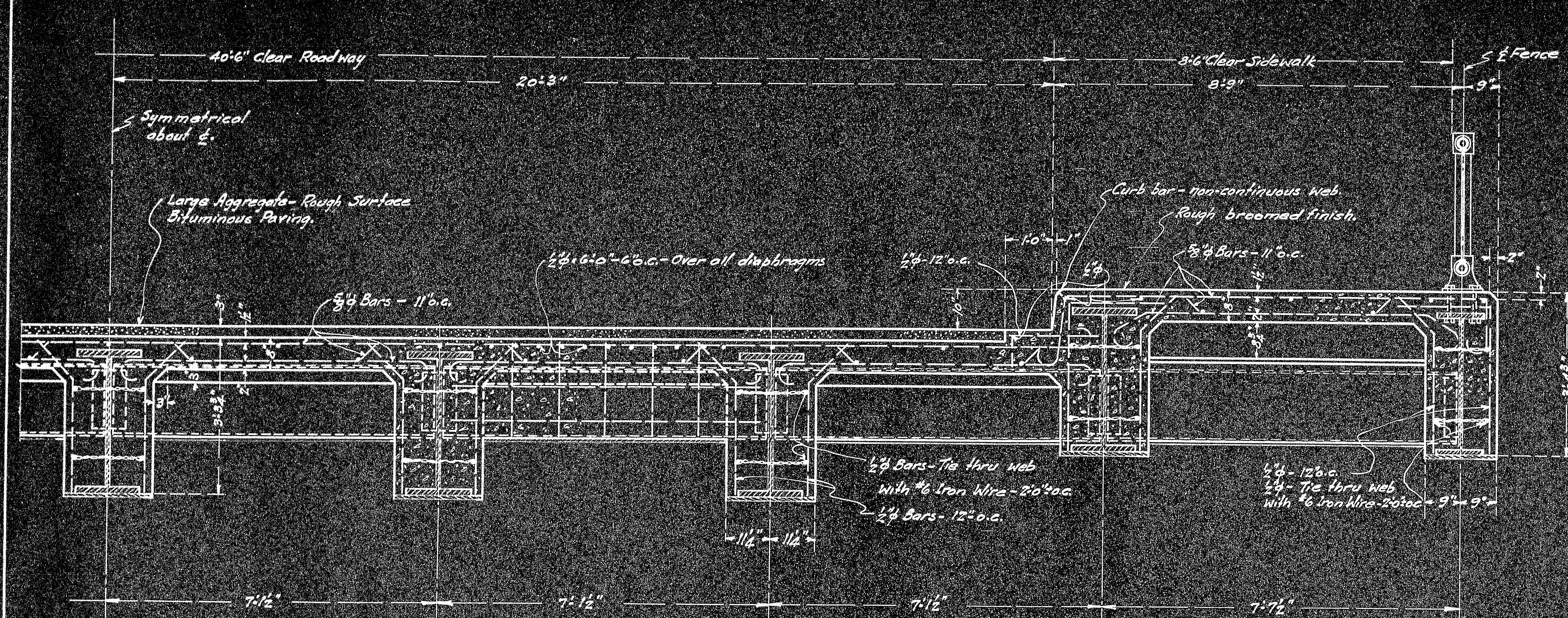
Scales as indicated  
From Office of Civil Engineer  
Date Issued: 6-2-37  
Approved: *[Signature]*  
Engineer

Issue Date	Description	Revised

Designed  
Checked  
Drawn  
Reviewed  
Quantity  
Checked  
Quantity  
Checked

Sheet 4 of 7 Sheets  
1478-1 22'-36"





SECTION  
Scale 1/4" = 1'-0"

DETAIL OF RAIL CHAIR  
Scale 1/4" = 1'-0"

DETAILS 112-70

MAINE CENTRAL RAILROAD  
Portland Division  
Valuation Section No. 1  
BRIDGE #6240 - RINES HILL WATER ST.  
Just West of Station,  
AUGUSTA, ME.

Scales as noted  
From Office of Chief Engineer  
BOSTON, MASS.

Date Issued 4-6-27  
Approved by  
Engineer of Structures

Designed by  
Checked by  
Drawn by  
Estimated by

Table of Additions and Changes  
Use Only Prints of Latest Date

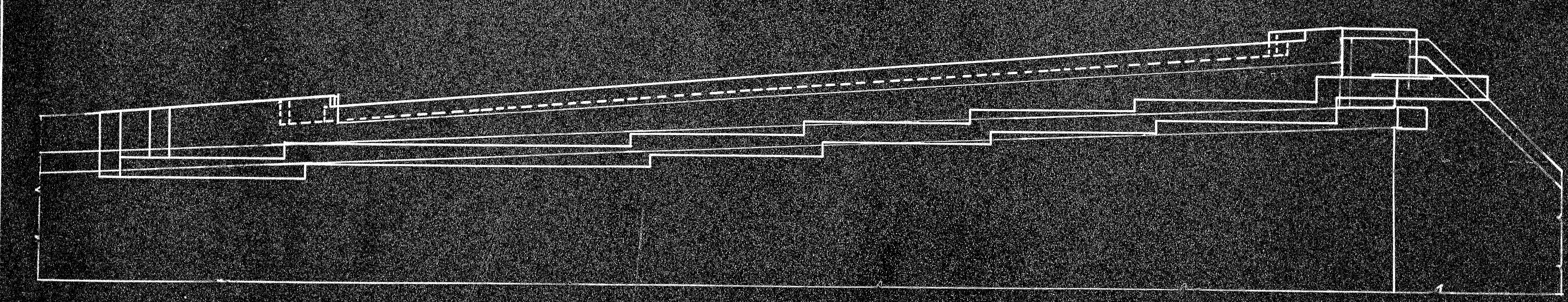
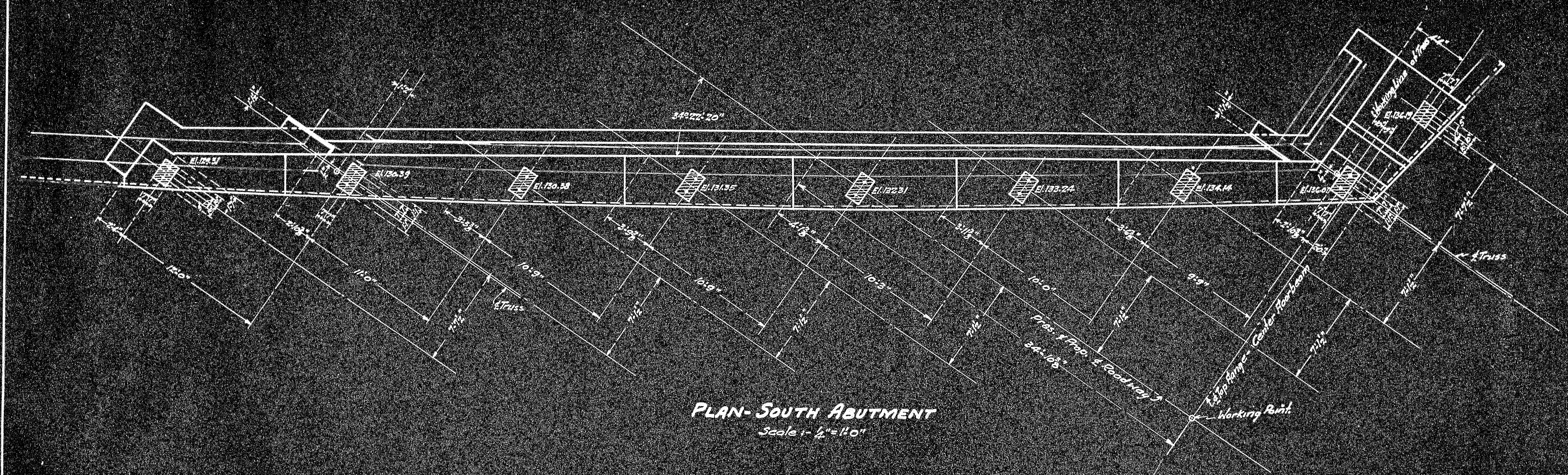
Sheet 5 of 7 Sheets

14 1/2" x 22" x 36"









112-72

Issue	Date	Description	Work
1			
2			
3			
4			
5			
6			
7			
8			
9			
10			

**MASONRY PLAN-SOUTH ABUTMENT**  
**MAINE CENTRAL RAILROAD**  
 Portland Division  
 Valuation Section No. 1  
**BRIDGE No. 62.40-RINGS HILL-WATER ST.**  
 Just West of Station  
**AUGUSTA, ME.**  
 Scale 1/2"=10'  
 Drawn by: [Signature]  
 Checked by: [Signature]  
 Date Issued: 4-10-57  
 Approved: [Signature]  
 Engineer: [Signature]  
 Sheet 7 of 7 Sheets.

112-72-1 22-56